



# Get ready for 7th grade at **Rocky Run Middle School**





Today we will . . .

**01**

Meet key staff @ Rocky

**02**

Learn about student life @ Rocky


**03**

Learn how to choose classes & electives



# 01

Who are some  
important people to  
know?



# Rocky Run Administrators



Mr. Kownacki,  
Principal



Ms. Hong,  
Director of  
Student Services



Dr. Sweeney  
Assistant  
Principal



Ms. Sweet,  
Assistant  
Principal

Mr. Kownacki, our principal is easily identifiable as he wears bowties 4 out of 5 days a week! Ms. Hong is the administrator who leads the Student Services (counselors) Team. Each assistant principal works closely with either 7th or 8th grade. For the school year 2025-2026, Ms. Sweet will be the 7th grade level assistant principal.

# Student Services Team



Dr. Jacobson

Mrs. Bae

Ms. Hong,  
Director of  
Student Services

Mrs. Marshall

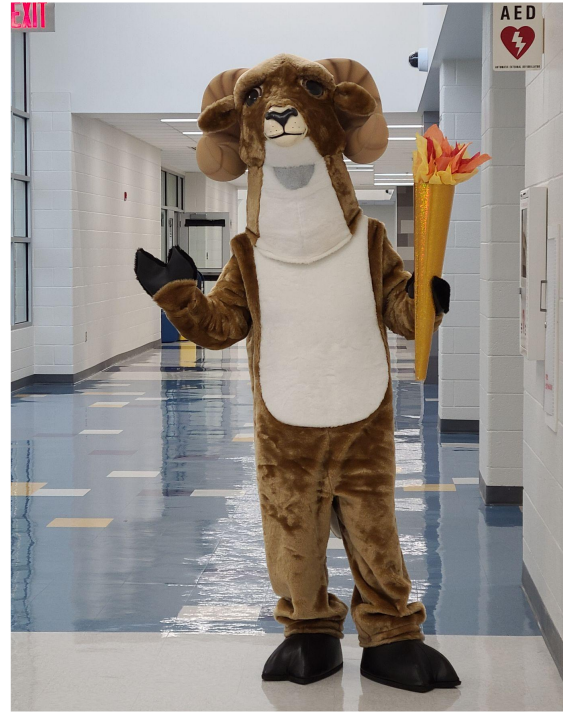
Each counselor has a 7th and an 8th grade team that we work closely with!

# After School Specialist



Ms. Campbell

Last but not least . . .



Rocky the Ram!



# 02

What to expect as a  
Rocky Run Ram





# Teams

Everyone on a team has the same:

- ★ English teacher
- ★ Science teacher
- ★ Social Studies teacher
- ★ Counselor
- ★ Assistant Principal

Rocky has 3 seventh grade teams.

Can you guess our team names?



# Block Scheduling

1st period begins at 7:30AM  
Dismissal is at 2:15PM

You will have 8 class periods:

1. English
2. Social Studies
3. Science
4. Math
5. Rock Time
6. Health & PE
7. Elective 1
8. Elective 2

**Rocky Run Middle School**  
**2024-2025 Bell Schedule**



Blue	Time	Gold	Instructional Minutes
1	7:30am-8:55am	2	85
3 (Rock Time)	Announcements Pledge and Moment of Silence at 9:00 9:00am-10:25am	4	85
Recess	10:25am-10:45am	Recess	20
5 LUNCH PERIOD	10:50am-12:45pm	6 LUNCH PERIOD	85
7	12:50pm-2:15pm	8	85

What do you notice about Blue and Gold Days?  
What do students have every day?

# What is ROCK TIME?

- ★ SEL & Advisory - Social Emotional Learning and community building
- ★ Student Support - Visit teachers to ask questions or get extra help on assignments
- ★ Student Groups (ex. SCA) might meet during this time

Rock Time Schedule	
9:00am-9:35am	Announcements/SEL/Executive Functioning/Community Circles/RAMS Read
9:35am-9:40am	Transition
9:40am-10:25am	Intervention/Enrichment/Office Hours/Work Time

# At Rocky Run we . . .

## ★ RAISE the RAM and create positive impact

During the first few weeks of school we learn about what it means to RAISE the RAM at Rocky Run. Teachers can recognize students when they 'Raise The Ram' by awarding them with a RAM card. Students then have the option of putting their card in their team mailbox for a weekly drawing. Mr. Kownacki announces winners from each time and they get to receive a prize and be recognized in our weekly newsletter!

Student: \_\_\_\_\_  
Staff: \_\_\_\_\_

Respectful  
 Accountable  
 Inclusive  
 Safe  
 Engaged

\_\_\_\_\_

\_\_\_\_\_

\_\_\_\_\_

**RAISE the Ram!**



# What else is new in Middle School?

- Lockers - Each student is assigned a hallway and PE locker
- Changing out for PE - Students have the option of purchasing a RR PE uniform or bringing workout clothes from home
- Schoology & SIS - Students will utilize these tools more than ever to keep track of assignments and grades
- No assigned seating in the Cafeteria. Enjoy your lunch with whomever you like!





# 03

## How to choose classes and electives



# Important for ALL Classes

## You WILL have New Challenges

- Ask questions
- Stay after school for extra help

## Manage your

- Don't **time** procrastinate!
- Use class time or rock time to get everything done

## Ask for help!

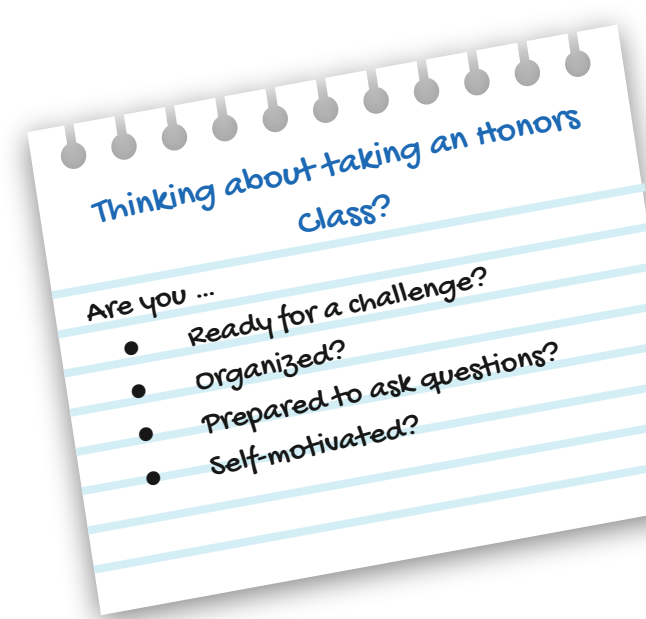
- Teachers, counselors and staff are always willing to help!

No matter what courses you choose (general, honors, HS credit), be ready for new challenges and adjustments! Middle School is the time to grow your 'self-advocacy' muscles!

# Core Classes

All 7th Graders will take:

1. **English**
2. **US History**
3. **Life Science**
4. **Math**
  - a. Math 6 → **Math 7**
  - b. Adv. Math 6 → **Math 7 HN (Pre-Algebra curriculum)**
  - c. **Algebra 1 HN** (Eligible students)
5. **Health & PE**
6. Elective 1
7. Elective 2
8. Rock Time





And now let's  
talk about ...  
**ELECTIVES!**



# There are 2 types of electives



## Year Long Electives

- These classes go from August to June (Orchestra, Band, Chorus and World Languages\*)



## Semester Electives

- These classes are half-year
- August to January and February to June



There are **NO** required electives in middle school

\* World Language classes are High School level course



# Elective Options:

## OPTION 1

Yearlong Elective
Yearlong Elective

## OPTION 2

Yearlong Elective	
Semester Elective	Semester Elective

## OPTION 3

Semester Elective	Semester Elective
Semester Elective	Semester Elective



# Sample Schedules:



2 year-long electives:

Period	Fall Semester	Spring Semester
1	Math	
2	Spanish 1	
3	Rock Time	
4	Band	
5	Health & PE	
6	English	
7	Life Science	
8	US History	



1 year-long and 2 semester electives:

Period	Fall Semester	Spring Semester
1	English	
2	FACS 1	Computer Solutions
3	Rock Time	
4	US History	
5	Math	
6	Orchestra	
7	Health & PE	
8	Life Science	



4 semester electives:

Period	Fall Semester	Spring Semester
1	Creative Writing	STEM Solutions
2	US History	
3	Rock Time	
4	Music Lab	FACS 1
5	Math	
6	English	
7	Life Science	
8	Health & PE	

# Yearlong Electives:



## MUSIC CLASSES:

-  Band
-  Orchestra
-  Chorus

\*Placement is based on auditions.

\*There are Winter and Spring concerts, and a music competition/amusement park field trip at the end of the school year.





# Yearlong Electives:



## WORLD LANGUAGES:



Spanish 1



French 1

\*\*All language courses are HIGH SCHOOL CREDIT courses.  
That means high school level expectations and coursework.







# Semester Electives:

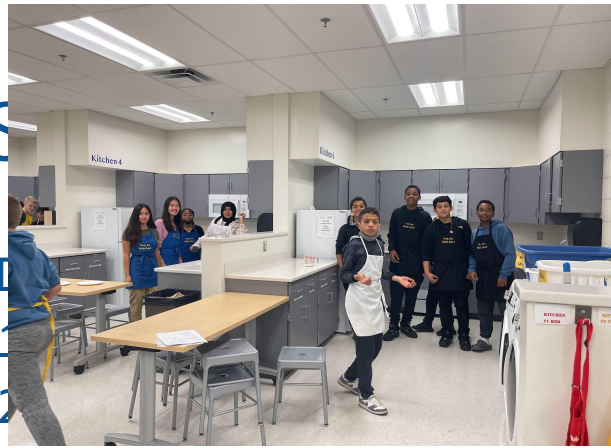
## FAMILY AND CONSUMER SCIENCES

 FACS 1

 FACS 2

Students explore careers as well as life skills like cooking, baking and sewing!





# Semester Electives



## BUSINESS & INFO TECH



### Computer Solutions

Practical computer skills: typing, computer components, operating systems, presentation tools, spreadsheets, etc.



### Coding and Innovative Technologies

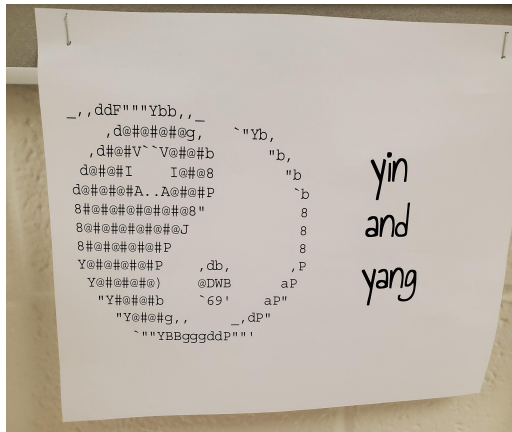
Introduction to coding and emerging technologies through hands-on projects (Must take Computer Solutions FIRST)



### STEM Solutions

Students learn in a project-based environment, simulating systems, assessing impact and gaining insight into how to approach real-world problems.





# Semester Electives:



## ENGINEERING



### Engineering 1: Design and Modeling

- Students apply the engineering design process to solve real world problems and understand the influence of creativity and innovation in their lives



### Engineering 2: Simulation and Fabrication

- Active participation in research, design, fabrication, and prototype testing, students will explore various topics in Technology, such as structural engineering and transportation systems. **\*Students must take Engineering 1 before Engineering 2.**





# Semester Electives:



## THEATRE



### Theater Arts Appreciation

Students will learn the basics of performance and collaboration.



### Advanced Theater Arts Appreciation

Prerequisite - Theater Arts Appreciation



### Technical Theater Arts Appreciation

Students will explore production areas including lighting, sound, scenery, costumes, hair, makeup and design.

\*\* Think of Theater Arts as everything that happens on a stage: public speaking, presenting, etc. For Technical Theater, think about all the things that must happen off-stage: lighting to show actors, making sure actors can be heard (sound), designing the scenery.





# Semester Electives:



## ART



### Art Foundations



### Art Extensions

- Students in both Foundations and Extensions learn and practice a multitude of different art forms



### Computers in Art

- Students work with a variety of software applications, tools, and equipment to create digital images, interactive art, animations, and games



### 3D Art Exploration

- Construct and form three-dimensional sculptures, ceramic objects, models, and installations that express ideas related to the theme of boundaries.





# Semester Electives:



## GENERAL:



Music Participation Lab (Intro to Guitar, Piano, and Music Theory)

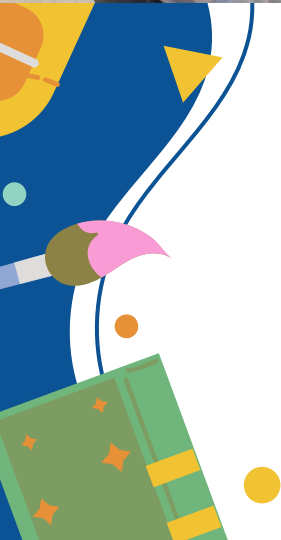


Creative Writing



Media Communication (Rams News Show)





# New Electives



GENERAL:



Career Explorations - Semester Elective

This course allows students to explore career options and begin investigating career opportunities. This course also helps students identify and demonstrate the workplace skills that employers desire in their future employees.



# AFTER SCHOOL

You will get LOTS of details when 7th grade begins but the most important things to know about After School are . . .

It's **FREE!**

Activities include: **Clubs, Sports, Activities** and ALSO getting extra help or **support from TEACHERS**

There are **LATE BUSES** 4 days a week for all bus riders

Check out the [After School webpage](#) for more information!



# Elective Videos

Click on the Elective to watch a short video about the course!

<a href="#"><u>Art</u></a>	<a href="#"><u>Band</u></a>
<a href="#"><u>Business and Info Technology</u></a>	<a href="#"><u>Chorus</u></a>
<a href="#"><u>Creative Writing</u></a>	<a href="#"><u>Engineering</u></a>
<a href="#"><u>Family &amp; Consumer Science</u></a>	<a href="#"><u>Media Communications</u></a>
<a href="#"><u>Music Participation Lab</u></a>	<a href="#"><u>Orchestra</u></a>
<a href="#"><u>Theater</u></a>	<a href="#"><u>World Languages</u></a>
<a href="#"><u>Link to ALL</u></a>	

# Important Links

Here are extra resources where you can find lots of details about the information shared today!

<a href="#"><u>Rocky Run Webpage</u></a>	<a href="#"><u>Academic Advising Page</u></a>
<a href="#"><u>After School</u></a>	<a href="#"><u>Course Catalog (Descriptions)</u></a>



MIDDLE  
SCHOOL  
HOME OF THE RAMS

See you  
soon!

